

DEPARTMENT OF THE ARMY TECHNICAL MANUAL

Organizational, Direct Support, and General Support
Maintenance Repairs Parts and Special Tools List
(INCLUDING DEPOT MAINTENANCE REPAIR PARTS AND SPECIAL TOOLS)
DISPERSER, RIOT CONTROL AGENT, PORTABLE, M3
FSN 1040-711-8296

Current as of 1 March 1972

Headquarters, Department of the Army, Washington, D.C.
27 April 1972

		Page	Illus. Figure
Section	I. INTRODUCTION -----	1	
	II. REPAIR PARTS LIST -----	5	
Group	100. Gun -----	5	1
	200. Hose -----	5	2
	300. Tank -----	6	3, 4, 5, 6
	400. Accessories -----	9	
Section	III. SPECIAL TOOLS LIST - Not applicable		
	IV. REPAIR PARTS LIST -----	9	
Group	100. Gun -----	9	1
	200. Hose -----	11	2
	300. Tank -----	11	3, 4, 5, 6
	400. Accessories -----	17	
	500. Repair Kit -----	17	
Section	V. SPECIAL TOOLS LIST - Not applicable		
	VI. FEDERAL STOCK NUMBER AND REFERENCE NUMBER INDEX -----	24	

Section I. INTRODUCTION

1. Scope

This manual lists repair parts required for the performance of organizational, direct support, and depot maintenance of the M3 disperser.

parts which must be removed for replacement of the authorized parts. Parts lists are composed of functional groups in ascending numerical sequence with the parts in each group listed in figure and item number sequence.

2. General

This Repair Parts and Special Tools List is divided into the following sections:

b. Special Tools List - Section III. Not applicable.

a. Repair Parts List - Section II. A list of repair parts authorized at the organizational level for the performance of maintenance. The list also includes

c. Repair Parts List - Section IV. A list of repair parts authorized at the direct support, general support, and depot levels for the performance of maintenance. The list also includes parts

* This manual supersedes TM 3-1040-214-20P, 29 May 1962 including all changes and TM 3-1040-214-35P, 11 July 1962 including all changes.

which must be removed for the replacement of the authorized parts. Parts lists are composed of functional groups in ascending numerical sequence, with parts in each group listed in figure and item number sequence.

d. *Special Tools List - Section V. Not applicable.*

e. *Federal Stock Number and Reference Number Index - Section VI.* A list, in ascending numerical sequence, of all Federal stock numbers appearing in the listings, followed by a list, in alphameric sequence, of all reference numbers appearing in the listings. Federal stock number and reference numbers are cross-referenced to each illustration figure and item number appearance.

3. Explanation of Columns

The following provides an explanation of columns found in the tabular listings.

a. *Source, Maintenance, and Recoverability Codes (SMR), (5 Positions).*

(1) *Source codes positions (1 and 2).* Indicates the source for the listed items. Source codes are:

Code	Explanation
PA -----	Item procured and stocked for anticipated or known usage.
PB -----	Item procured and stocked for insurance purposes because essentiality dictates that a minimum quantity be available in the supply systems
PC -----	Item procured and stocked and which otherwise would be coded PA except that it is deteriorative in nature.
PD -----	Support item, excluding support equipment, procured for initial issue or outfitting and stocked only for subsequent or additional initial issues or outfittings. Not subject to automatic replenishment.
PE -----	Support equipment procured and stocked for initial issue or outfitting to specified maintenance repair activities.
PF -----	Support equipment which will not be stocked but which will be centrally procured on demand.
PG -----	Item procured and stocked to provide for sustained support for the life of the equipment. It is applied to an item peculiar to the equipment which because of probable discontinuance or shutdown of production facilities would proved uneconomical to reproduce at a later time.
KD -----	An item of depot overhaul/repair kit and not purchased separately.

Code	Explanation
KF -----	Depot kit defined as a kit that provides items required at the time of overhaul or repair. An item of a maintenance kit and not purchased separately. Maintenance kit defined as a kit that provides an item that can be replaced at organizational or intermediate levels of maintenance.
KB -----	Item included in both a depot overhaul/repair kit and a maintenance kit.
MO -----	Item to be manufactured or fabricated at organizational level.
MF -----	Item to be manufactured or fabricated at the direct support maintenance level.
MH -----	Item to be manufactured or fabricated at the general support maintenance level.
MD -----	Item to be manufactured or fabricated at depot maintenance level.
AO -----	Item to be assembled at organizational level.
AF -----	Item to be assembled at the direct support maintenance level.
AH -----	Item to be assembled at the general support maintenance level.
AD -----	Item to be assembled at depot maintenance levels.
XA -----	Item is not procured or stocked because the requirements for the item will result in the replacement of the next higher assembly.
XB -----	Item is not procured or stocked. If not available through salvage, requisition.
XC -----	Installation drawing, diagram, instruction sheet, field service drawing, that is identified by manufacturers' part number.

NOTE

Cannibalization or salvage may be used as a source of supply for any items source coded above except those coded XA and aircraft support items as restricted by AR 700-42.

(2) *Maintenance codes (positions 3 and 4).*

(a) *Position 2* The maintenance code entered in third position indicates the lowest maintenance level authorized to remove, replace, and use the support item. Capabilities of higher maintenance categories are considered equal or better. Maintenance codes are:

Code	Explanation
C -----	Crew/operator
O -----	Organizational maintenance
F -----	Direct support maintenance
H -----	General support maintenance
D -----	Depot maintenance

(b) *Position 4* The maintenance code entered in the fourth position indicates whether the item is to be repaired and identifies the lowest maintenance level with the capability to perform complete repair (i.e., all authorized maintenance functions). Capabilities of higher maintenance categories are considered equal or better. Maintenance codes are:

Code	Explanation
O -----	Organizational maintenance
F -----	Direct support maintenance
H -----	General support maintenance
D -----	Depot maintenance
Z -----	Non-repairable. No repair is authorized.

(3) *Recoverability code (position 5)*. Indicates whether unserviceable items should be returned for recovery or salvage. Recoverability codes are:

Code	Explanation
Z -----	Non-repairable item. When unserviceable, condemn and dispose at the level indicated in position 3.
F -----	Reparable item. When uneconomically repairable, condemn and dispose at the direct support level.
H -----	Reparable item. When uneconomically repairable, condemn and dispose at the general support level.
D -----	Reparable item. When beyond lower level repair capability, return to depot. Condemnation and disposal not authorized below depot level.
L -----	Reparable item. Repair, condemnation, and disposal not authorized below depot/Specialized Repair Activity level.
A -----	Item requires special handling or condemnation procedures because of specific reasons (i.e., precious metal content, high dollar value, critical material or hazardous material). Refer to appropriate manuals/directives for specific instructions.

b. *Federal Stock Number*. Indicates the Federal stock number assigned to the item and will be used for requisitioning purposes.

c. *Description*. Indicates the Federal item name and a minimum description required to identify the item. The last line indicates the reference number followed by the applicable Federal Supply Code for Manufacturer (FSCM) in parentheses. The FSCM is used as an element in item identification to designate manufacturer or distributor or Government agency, etc., and is identified in SB 708-42. Items that are included in kits

and sets are listed below the name of the kit or set with quantity of each item in the kit or set indicated in front of the item name.

d. *Unit of Measure (U/M)*. Indicates the standard or basic quantity of which the listed item is used in performing the actual maintenance function. This measure is expressed by a two-character alphabetical abbreviation, e.g., ea, in., pr, etc., and is the basis used to indicate quantities and allowances in subsequent columns. When the unit of measure differs from the unit of issue, the lowest unit of issue that will satisfy the required units of measure will be requisitioned.

e. *Quantity Incorporated in Unit*. Indicates the quantity of the item used in the breakout shown on the illustration figure, which is prepared for a functional group, subfunctional group, or an assembly. A "V" appearing in this column in lieu of a quantity indicates that no specific quantity is applicable, e.g., shims, spacers, etc.

f. *15-Day Organizational Maintenance Allowances*.

(1) An asterisk (*) entered in the allowance subcolumns indicates that the repair part is authorized for use at the organizational level, and will be requisitioned on an "as required" basis until stockage is based on demand in accordance with AR 710-2.

(2) Major Army commanders are authorized to approve reductions in the range of support items authorized for use in units within their commands. Recommendations for increases, in range of items authorized for use, should be forwarded to the Commanding Officer, Edgewood Arsenal, ATTN: SMUEA-DE-ETL, Edgewood Arsenal, MD 21010, for action on such recommendations. Changes approved will be reflected in a revision to the manual.

g. *30-Day DS/GS Maintenance Allowances*.

(1) An asterisk (*) entered in the direct support (DS) and/or general support (GS) subcolumns indicates that the repair part is authorized for use at that level, and will be requisitioned on an "as required" basis.

(2) The repair parts authorized at the DS/GS levels are for the maintenance mission at these levels.

(3) Requirements for repair parts stockage and for distribution to supported units will be based on demand and determined in accordance with AR 710-2.

h. *1-Year Allowances Per 100 Equipments/Contingency Planning Purposes*. An asterisk (*) entered in this column indicates that the total

quantity of the repair part required for distribution and contingency planning purposes will be based on demand data.

i. Depot Maintenance Allowance Per 100 Equipment. An asterisk (*) entered in this column indicates that the repair part is authorized for use at the depot level, and will be requisitioned on an "as required" basis.

j. Illustration. This column is divided as follows:

(1) *Figure number.* Indicates the figure number of the illustration on which the item is shown.

(2) *Item number.* Indicates the callout number used to reference the item on the illustration.

4. Special Information

a. Detailed assembly instructions for items source coded "A" are found in Operator's and Organizational Manual (TM 3-1040-214-12). Assembly components are listed immediately following the item to be assembled.

b. Repair parts kits are listed in Repair Kit Group in ascending Federal stock number sequence. The Federal Stock Number and Reference Number Index will reference the word KIT in the figure number column.

c. Action change codes indicated in the left-hand margin of the listing page denote the following:

- N - Indicates an added item.
- C - Indicates a change in data.
- R - Indicates a change in FSN only.

d. The following publications pertain to the M3 disperser and its components:

- TM 3-1040-214-12 Operator's and Organizational Maintenance Manual
- TM 3-1040-214-34 Direct Support and General Support Maintenance Manual

5. How to Locate Repair Parts

a. When Federal stock number or reference number is unknown:

(1) *First.* Using the Table of Contents, determine the functional group within which the repair part belongs, i.e., gun, hose, tank. This is necessary since illustrations are prepared for functional groups and listings are divided into the same groups.

(2) *Second.* Find the illustration covering the group to which the repair part belongs.

(3) *Third.* Identify the repair part on the illustration and note the illustration figure and item number of the repair part.

(4) *Fourth.* Using the Repair Parts Listing, find the functional group to which the repair part belongs and locate the illustration figure and item number noted on the illustration.

b. When Federal stock number or reference number is known:

(1) *First.* Using the Index of Federal Stock Numbers and Reference Numbers, find the pertinent Federal stock number or reference number. This index is in ascending FSN sequence followed by a list of reference numbers in ascending alphameric sequence, cross-referenced to the illustration figure number and item number.

(2) *Second.* Using the Repair Parts Listing, find the functional group of the repair part and the illustration figure number and item number referenced in the Index of Federal Stock Numbers and Reference Numbers.

6. Abbreviation

<i>Abbreviation</i>	<i>Explanation</i>
cres -----	corrosion resistant steel
syn -----	synthetic
pltd -----	plated

7. Reporting of Equipment Publication Improvements

The reporting of errors, omissions, and recommendations for improving this publication should be submitted on DA Form 2028 (Recommended Changes to Publications) and forwarded direct to Commanding Officer, Edgewood Arsenal. ATTN: SMUEA-DE-ETL, Edgewood Arsenal, MD. 21010.

Section II. REPAIR PARTS LIST

Action Code	(1) SMR Code	(2) Federal Stock No.	(3) Description Reference Number & Mfr Code Usable on Code		(4) Unit of Meas	(5) Qty Inc in Unit	(6) 15-Day Organizational Maintenance Alw				(7) Illustration	
							(a) 1-5	(b) 6-20	(c) 21-150	(d) 51-100	(a) Figure No.	(b) Item No.
							GROUP 100-GUN GROUP					
	PB OO F	1040-771-4557	GUN, PORTABLE, RIOT CONTROL AGENT, DISPERSER, M9 D116-4-16 (81361)		ea	1	*	*	*	*	1	
	PA OZ Z	1040-771-4558	CONNECTOR B116-4-23 (81361)		ea	1	*	*	*	*	1	1
R	PA OZ Z	4720-812-0205	TUBING, RUBBER MIL-R-3065 (81349)			1	*	*	*	*	1	8
C	PB OZ Z	1040-771-4552	BARREL ASSEMBLY C116-4-26 (81361)		ea	1	*	*	*	*	1	4
	PA OZ Z	1040-777-2793	SLEEVE B116-4-32 (81361)		ea	1	*	*	*	*	1	5
	PA OZ Z	1040-777-2794	COLLAR B116-4-33 (81361)		ea	1	*	*	*	*	1	6
R	PA OZ Z	5305-724-5811	SETSCREW stl pltd, chromate finish, headless, socket-drive, 0.125 cup point, 1/4 (0.250) in.-28 UNF-3A, 1/4 in. lg MS51964-64 (96906)		ea	8	*	*	*	*	1	7
	PA OZ Z	1040-822-1188	CATCH, SAFETY 2 per bag B116-4-35 (81361)		bg	1 ea	*	*	*	*	1	8
R	PA OZ Z	5305-984-4984	SCREW, MACHINE pan hd, stl pltd, No. 6-32 UNC-2A, 5/16 in. lg MS35206-227 (96906)		ea	2	*	*	*	*	1	9
C	PB OZ Z	1040-771-4553	PLATE, COVER C116-4-29 (81361)		ea	1	*	*	*	*	1	18
R	PA OZ Z	5305-984-6193	SCREW, MACHINE pan hd, stl pltd, No. 8-82 UNC-2A, 1/2 in. lg MS35206-227 (96906)		ea	2	*	*	*	*	1	14
GROUP 200-HOSE GROUP												
C	AO OO Z		HOSE ASSEMBLY, FUEL, FLAMETHROWER C81-1-9711 (81861)			1					2	

Action Code	(1) SMR Code	(2) Federal Stock No.	(3) Description		(4) Unit of Meas	(5) Qty Inc in Unit	(6) 15-Day Organizational Maintenance Alw				(7) Illustration	
							(a) 1-5	(b) 6-20	(c) 21-150	(d) 51-100	(a) Figure No.	(b) Item No.
							Reference Number & Mfr Code	Usable on Code				
R	PB OZ Z	4730-895-3048	CONSISTING OF: COUPLING HALF, QUICK DISCONNECT D150-1-11-4-2A (81861)		ea	1	*	*	*	*	2	1
N	PA OZ Z	5330-579-1943	PACKING, PREFORMED syn rubber, 0.837 in. id, 1.191. in. od H12-56JF (78357)		ea	2	*	*	*	*	2	2
	PB OZ Z	4720-839-3423	HOSE ASSEMBLY, NONMETALLIC B-81-1-6930 (81361)		ea	1	*	*	*	*	2	3
			GROUP 300-TANK GROUP									
	AO OO Z		AGENT SECTION PIPE AND CAP ASSEMBLY C116-6-154 (81361)			2					3	1
	PB OZ Z	1040-871-2600	CONNECTOR. PIPE AND CAP B116-6-159 (81361)		ea	2	*	*	*	*	3	2
	PA OZ Z	5330-248-3836	PACKING, PREFORMED syn rubber, 0.364 in. id, 0.504 in. od, 0.070 in. o/a h MS29513-012 (96906)		ea	2	*	*	*	*	3	3
	PB OZ Z	1040-861-6744	CAP, TANK B116-6-153 (81361)		ea	2	*	*	*	*	3	4
C	PB OZ Z	5365-803-7301	RING, RETAINING, EXTERNAL stl pltd, w/chromate finish, 0.461 in. id, 0.035 in. thk MS16624-1050 (96906)		ea	2	*	*	*	*	3	5
R	PA OZ Z	5330-265-1092	PACKING, PREFORMED 1.296 in. id, 1.574 in. od, 0.143 in. o/a h, black 10 per bag MS29513-219 (96906)		bg	2 ea	*	*	*	*	3	6
C	PA OZ Z	4710-850-3311	PIPE, STEEL zinc coated, 1/4 ips x 17 7/8 in. lg., both ends threaded, 1/8-27 NPT WW-P-406 WTA Class 2 (81348)		ea	2	*	*	*	*	3	7
C	PB OZ Z	4730-851-6002	CAP, PIPE zinc coated finish, 1/8-27 NPT, rh, 150 wp, with 3 1/16 in. dia holes on periphery WW-P-521 (81348)		ea	2	*	*	*	*	3	8
N	PB OZ Z	5130-905-8451	NUT, SELF LOCKING hexagon, No. 6-32 MS21083N06 (96906)		ea	1	*	*	*	*	3	10

N	PB	OZ	Z	4730-102-9670	COUPLING HALF, QUICK DISCONNECT, NIPPLE C150-1-4-2A (81361)	ea	1	*	*	*	*	3	11
N	PB	OZ	Z	5340-022-8381	PLUG, PROTECTIVE, DUST AND MOISTURE SEAL 4088 (78357)	ea	1	*	*	*	*	3	12
N	PB	OZ	Z	5305-889-3001	SCREW, MACHINE stl, cres, No. 6-32, 0.625 in. lg MS35206-231 (96906)	ea	1	*	*	*	*	3	13
N	PA	OZ	Z	5330-579-1943	PACKING, PREFORMED rubber, 0.837 in. id, 1.191 in. od H12-56JF (78357)	ea	1	*	*	*	*	3	14
N	PB	OZ	Z	4730-893-5001	CAP, PROTECTIVE AND PRESSURE, COUPLING HALF, QUICK DISCONNECT D150-1-14-11 (81361)	ea	1	*	*	*	*	3	15
R	PB	OZ	Z	4710-277-5526	TUBE, COPPER unsealed, seamless, 0.312 in. dia, 0.035 in. wall thk, 1000 psi hydrostatic test, pressure rating, 1 ft 1 3/8 in. lg 31094R (24617)	ea	1	*	*	*	*	3	18
R	PB	OZ	Z	5305-724-6794	SETSCREW stl pltd, socket drive, cup point, No. 10-32 NF-3, 3/16 in. lg	ea	1	*	*	*	*	3	20
C	PA	OZ	Z	1040-871-2601	VALVE, SHUTOFF MODIFICATION C116-6-161 (81361)	ea	1	*	*	*	*	3	21
C	PB	OZ	Z	1040-861-9816	HANDLE, SHUTOFF VALVE B116-6-150 (81361)	ea	1	*	*	*	*	3	22
	PB	OZ	Z	1040-886-5730	HOSE ASSEMBLY B116-0-158 (81361)	ea	2	*	*	*	*	3	23
C	PB	OZ	Z	5305-984-6189	SCREW, MACHINE stl pltd, pan hd, No. 8-32 UNC-2A, 1/4 in. lg MS35206-241 (96906)	ea	1	*	*	*	*	3	24
	PA	OZ	Z	5330-248-3832	PACKING, PREFORMED syn rubber, 0.145 in. id, 0.285 in. od, 0.070 o/a h MS29513-007 (96906)	ea	1	*	*	*	*	3	25
C	PA	OZ	Z	5310-050-6644	WASHER, FLAT lead, 0.674 in. id, 7/8 in. od, 0.103 in. o/a h 38945ENP (81361)	ea	1	*	*	*	*	3	26
C	PB	OZ	Z	1040-860-2247	PRESSURE SECTION TUBE ASSEMBLY B116-6-148 (81361)	ea	1	*	*	*	*	4	1
C	PB	OZ	Z	1040-160-8050	REGULATOR, PRESSURE C81-1-778 (81361)	ea	1	*	*	*	*	4	1.1

Action Code	(1) SMR Code	(2) Federal Stock No.	(3) Description	(4) Unit of Meas	(5) Qty Inc in Unit	(6) 15-Day Organizational Maintenance Alw				(7) Illustration	
						(a) 1-5	(b) 6-20	(c) 21-150	(d) 51-100	(a) Figure No.	(b) Item No.
						Reference Number & Mfr Code		Usable on Code			
C	PA OZ Z	4730-529-2366	COUPLING HALF, QUICK DISCONNECT 3000-63 (793992)	ea	1	*	*	*	*	4	2
R	PA OZ Z	5310-080-8495	NUT, PLAIN, WING 1/4-20 UNC-2B 50 per can MS35425-39 (96906)	cn	1 ea	*	*	*	*	4	3
	PB OH H	1040-293-5891	TANK AND VALVE PRESSURE B81-1-879 (81361)	ea	1	*	*	*	*	4	4
	PB OH H	1040-160-8027	SHAFT ASSEMBLY, VALVE C81-1-883 (81361)	ea	1	*	*	*	*	4	5
			PRESSURE REGULATOR AND SAFETY VALVE SECTION								
C	PA OZ Z	1040-836-3490	HEAD, SAFETY, PRESSURE RELIEF 175 psi max B77-EW A002 (92394)	ea	1	*	*	*	*	5	1
			CARRIER SECTION								
	PA OZ Z	1040-205-0358	STRAP ASSEMBLY, UPPER B81-1-520 (81361)	ea	2	*	*	*	*	6	1
C	PB OZ Z	1040-696-1374	PACK, CARRIER C81-1-873 (81361)	ea	1	*	*	*	*	6	2
C	PB OZ Z	5315-842-3044	PIN, COTTER stl, phosphate finish, 1/12 in. nom dia, 3/4 in. nom lg MS24665-283 (96906)	ea	2	*	*	*	*	6	3
C	PB OZ Z	5315-663-1478	PIN, STRAIGHT, HEADED stl, rd hd, 1/4 in. dia of shank, 7/8 in. lg under hd, drilled shank A81-1-518- (81361)	ea	2	*	*	*	*	6	4
C	PB OZ Z	5305-068-0501	SCREW, CAP, HEXAGON HEAD stl pltd, 1/4-20 UNC-2A, 0.625 lg MS90725-5 (96906)	ea	4	*	*	*	*	6	5
C	PB OZ Z	5310-582-5965	WASHER, LOCK stl, cad pltd, split helical, hole dia 0.255 in., 0.489 in. id, 0.062 in. thk AN935416 (88044)	ea	5	*	*	*	*	6	6
C	PB OZ Z	5310-761-6882	NUT, PLAIN, HEXAGON stl pltd, 1/4-20 UNC-2B MS51967-2 (96906)	ea	5	*	*	*	*	6	7

	PA	OZ	Z	1040-205-0360	STRAP ASSEMBLY, LONG B81-1-519 (81361)	ea	1	*	*	*	*	6	8
	PA	OZ	Z	1040-205-0361	STRAP ASSEMBLY, LOWER B81-1-520 (81361)	ea	2	*	*	*	*	6	9
C	PA	OZ	Z	4020-993-3583	CORD, NYLON 9 carriers per braid, 1 yarn per carrier, single yarn, olive drab, 1/8 in. nom dia, 400 lb breaking strength MIL-C-43307 (81349)	ft	12	*	*	*	*	6	10
C	PB	OZ	Z	5340-160-8065	CLAMP, LOOP stl, phosphate coating, 1/2 in. w o/a, 0.0598 in. thk, 1 1/16. in. loop ld, 9/12 in. dia of hole 5 per bundle A81-1-487 (81361)	bd	1 ea	*	*	*	*	6	1
C	PB	OZ	Z	5305-068-0502	SCREW, CAP, HEXAGON HEAD stl pltd, 1/4-20 UNC-2A, 3/4 in. lg MS90725-6 (96906)	ea	1	*	*	*	*	6	12
	PA	OZ	Z	1040-205-0359	STRAP ASSEMBLY, SHORT B81-1-519 (81361)	ea	1	*	*	*	*	6	14
GROUP 400-ACCESSORIES GROUP													
C	XB	00	Z		CHEST, PACKING E116-3-42 (81361)	ea	1						
R	PA	OZ	Z	8415-266-8677	GLOVES, RUBBER syn, 14 in. lg, size 10 ZZ-G-381, Type 1, Class 2 (81348)	pr	2	*	*	*	*		

Section IV. REPAIR PARTS UST

Action Code	(1) SMR Code	(2) Federal Stock Number	(3) Description Reference Number & Mfr Code Usable On Code		(4) Unit of Meas	(5) Qty inc in unit	(6) 30-Day DS Maint Allowance			(7) 30-Day GS Maint Allowance			(8) 1-yr Alw per 100 Equip CNTGCV	(9) Depot Maint Alw Per 100 Equip	(10) Illustration	
							(a) 1-20	(b) 21-50	(c) 51-100	(a) 1-20	(b) 21-50	(c) 51-100			(a) Figure no.	(b) Item no.
							GROUP 100-GUN GROUP									
	PB	OO	F	1040-771-4557	GUN, PORTABLE, RIOT CONTROL AGENT, DISPENSER, M9 D116-4-16 (81361)	ea	1	*	*	*	*	*	*	*	1	
	PA	OZ	Z	1040-771-4558	CONNECTOR B116-4-23 (81361)	ea	1	*	*	*	*	*	*	*	1	1
C	PB	FZ	Z	1040-771-4555	BODY, VALVE D116-4-17 (81361)	ea	1	*	*	*	*	*	*	*	1	2

Action Code	(1) SMR Code	(2) Federal Stock Number	(3) Description Reference Number & Mfr Code Usable On Code	(4) Unit of Meas	(5) Qty inc in unit	(6) 30-Day DS Maint Allowance			(7) 30-Day GS Maint Allowance			(8) 1-yr Alw per 100 Equip CNTGCY	(9) Depot Maint Alw Per 100 Equip	(10) Illustration	
						(a) 1-20	(b) 21-50	(c) 51-100	(a) 1-20	(b) 21-50	(c) 51-100			(a) Figure no.	(b) Item no.
						R	PA OZ Z	4720-812-0205	TUBING, RUBBER MIL-R-3065 (81349)	ea	3			*	*
C	PB OZ Z	1040-771-4552	BARREL ASSEMBLY C116-4-26 (81361)	ea	1	*	*	*	*	*	*	*	*	1	4
	PA OZ Z	1040-777-2793	SLEEVE B116-4-32 (81361)	ea	1	*	*	*	*	*	*	*	*	1	5
	PA OZ Z	1040-777-2794	COLLAR B116-4-33 (81361)	ea	1	*	*	*	*	*	*	*	*	1	6
R	PA OZ Z	5305-724-5811	SETSCREW stl pltd, chromate finish, headless, socket-drive, 0.125 cup point, 1/4 (0.250) in.-28 UNF-3A, 1/4 in. lg MS51964-64 (96906)	ea	3	*	*	*	*	*	*	*	*	1	7
	PA OZ Z	1040-822-1188	CATCH, SAFETY 2 per bag B116-4-35 (81361)	bg	1 ea	*	*	*	*	*	*	*	*	1	8
R	PA OZ Z	5305-984-4984	SCREW, MACHINE pn hd, stl pltd, No. 6-32 UNC-2A, a 5/16 in. lg MS35206-227 (96906)	ea	2	*	*	*	*	*	*	*	*	1	6
C	PB FZ Z	1040-439-7985	TRIGGER D116-4-24 (81361)	ea	1	*	*	*	*	*	*	*	*	1	10
C	PB FZ Z	1040-771-4551	SAFETY, TRIGGER ASSEMBLY B116-4-28 (81361)	ea	1	*	*	*	*	*	*	*	*	1	11
	PB FZ F	1040-771-4554	SPRING, TRIGGER B116-4-25 (81361)	ea	1	*	*	*	*	*	*	*	*	1	12
C	PB OZ Z	1040-771-4553	PLATE, COVER C116-4-29 (81361)	ea	1	*	*	*	*	*	*	*	*	1	13
R	PA OZ Z	5305-984-6193	SCREW, MACHINE pan hd, stl pltd, No. 8-32 UNC-2A, 1/2 in. lg MS35206-245 (96906).	ea	2	*	*	*	*	*	*	*	*	1	14
R	PB FZ Z	5315-826-3251	PIN, SPRING stl, passivated finish, 0.125 in. nom dia, 5/8 in. lg, 0.028 thk of material MS16562-223 (96906).	ea	1	*	*	*	*	*	*	*	*	1	15

GROUP 200-HOSE GROUP														
C	AO	OO	Z		HOSE ASSEMBLY, FUEL, FLAME - THROWER C81-1-9711 (81361) CONSISTING OF:		1						2	
R	PB	OZ	Z	4730-895-3048	COUPLING HALF, QUICK DISCONNECT D150-1-11-4-2A (81361)	ea	1	*	*	*	*	*	*	2 1
N	PA	OZ	Z	5330-579-1943	PACKING, PREFORMED syn rubber, 0.837 in. id, 1.191 in. od H12-56JF (78357)	ea	2	*	*	*	*	*	*	2 2
	PB	OZ	Z	4720-839-3423	HOSE ASSEMBLY, NONMETALLIC B81-1-6930 (81361)	ea	1	*	*	*	*	*	*	2 3
GROUP 300-TANK GROUP														
AGENT SECTION														
	AO	OO	Z		PIPE AND CAP ASSEMBLY C116-6-154 (81361)		2							3 1
	PB	OZ	Z	1040-871-2600	CONNECTOR, PIPE AND CAP B116-6-159 (81361)	ea	2	*	*	*	*	*	*	3 2
	PA	OZ	Z	5330-248-3836	PACKING, PREFORMED syn rubber, 0.364 in. id, 0.504 in. od, 0.070 in. o/a h MS29513-012 (96906).	ea	2	*	*	*	*	*	*	3 3
	PB	OZ	Z	1040-861-6744	CAP, TANK B116-6-153 (81361)	ea	2	*	*	*	*	*	*	3 4
C	PB	OZ	Z	5365-803-7301	RING, RETAINING, EXTERNAL stl pltd, w/chromate finish, 0.461 in. id, 0.035 in. thk MS16624-1050 (96906)	ea	2	*	*	*	*	*	*	3 5
R	PA	OZ	Z	5330-265-1092	PACKING, PREFORMED 1.296 in. id, 1.574 in. od, 0.143 in. o/a h, black, 10 per bag MS29513-219 (96906)	bg	2 ea	*	*	*	*	*	*	3 6
C	PB	OZ	Z	4710-850-3311	PIPE, STEEL zinc coated, 1/8 ips x 17 7/8 in. lg, both ends threaded, 1/8-27 NPT WW-P-406 WTA Class 2 (81348)	ea	2	*	*	*	*	*	*	3 7

Action Code	(1)			(2) Federal Stock Number	(3) Description Reference Number & Mfr Code Usable On Code	(4) Unit of Meas	(5) Qty inc in unit	(6) 30-Day DS Maint Allowance			(7) 30-Day GS Maint Allowance			(8) 1-yr Alw per 100 Equip CNTGCY	(9) Depot Maint Alw Per 100 Equip	(10) Illustration	
	SMR Code	OZ	Z					(a) 1-20	(b) 21-50	(c) 51-100	(a) 1-20	(b) 21-50	(c) 51-100			(a) Figure no.	(b) Item no.
C	PB	OZ	Z	4730-851-6002	CAP, PIPE zinc coated finish, 1/8-27 NPT, rh, 150 wp, with 3 1/16 in. dia holes on periphery WW-P-521 (81348)	ea	2	*	*	*	*	*	*	*	*	3	8
C	PB	FZ	Z	1040-160-8068	TANK, FUEL (AGENT) E81-1-483 (81361)	ea	1	*	*	*	*	*	*	*	*	3	9
N	PB	OZ	Z	5310-905-8451	NUT, SELF LOCKING hexagon, No. 6-32 MS21083N06 (96906)	ea	1	*	*	*	*	*	*	*	*	3	10
N	PB	OZ	Z	4730-102-9670	COUPLING HALF, QUICK DISCONNECT, NIPPLE C150-1-4-2A (81361)	ea	1	*	*	*	*	*	*	*	*	3	11
N	PB	OZ	Z	5340-022-8381	PLUG, PROTECTIVE, DUST AND MOISTURE SEAL 4088 (78357)	ea	1	*	*	*	*	*	*	*	*	3	12
N	PB	OZ	Z	5305-889-3001	SCREW, MACHINE stl, cres, No. 6-32, 0.0625 in. lg MS35206-231 (96906)	ea	1	*	*	*	*	*	*	*	*	3	13
N	PA	OZ	Z	5330-579-1943	PACKING, PREFORMED rubber, 0.837 in. id, 1.191 in. od H12-56JF (78357)	eaR	1	*	*	*	*	*	*	*	*	3	14
N	PB	OZ	Z	4730-893-5001	CAP, PROTECTIVE AND PRESSURE, COUPLING HALF QUICK DISCONNECT D150-1-14-11 (81361)	ea	1	*	*	*	*	*	*	*	*	3	15
C	PB	FZ	Z	1040-160-8014	HINGE, OUTER C81-1-1573 (81361)	ea	1	*	*	*	*	*	*	*	*	3	16
R	PB	FZ	Z	5320-068-6929	RIVET, SOLID button hd, stl, 3/16 in. nom dia, 1 1/8 in. nom lg MS20613-6P18 (96906)	ea	1	*	*	*	*	*	*	*	*	3	17
C	PB	OZ	Z	4710-277-5526	TUBE, COPPER unsealed, seamless, 0.312 in. dia, 0.035 in. wall thk, 1000 psi hydrostatic test, pressure rating 1 ft 1 3/8 in. lg 31094R (24617)	ea	1	*	*	*	*	*	*	*	*	3	18

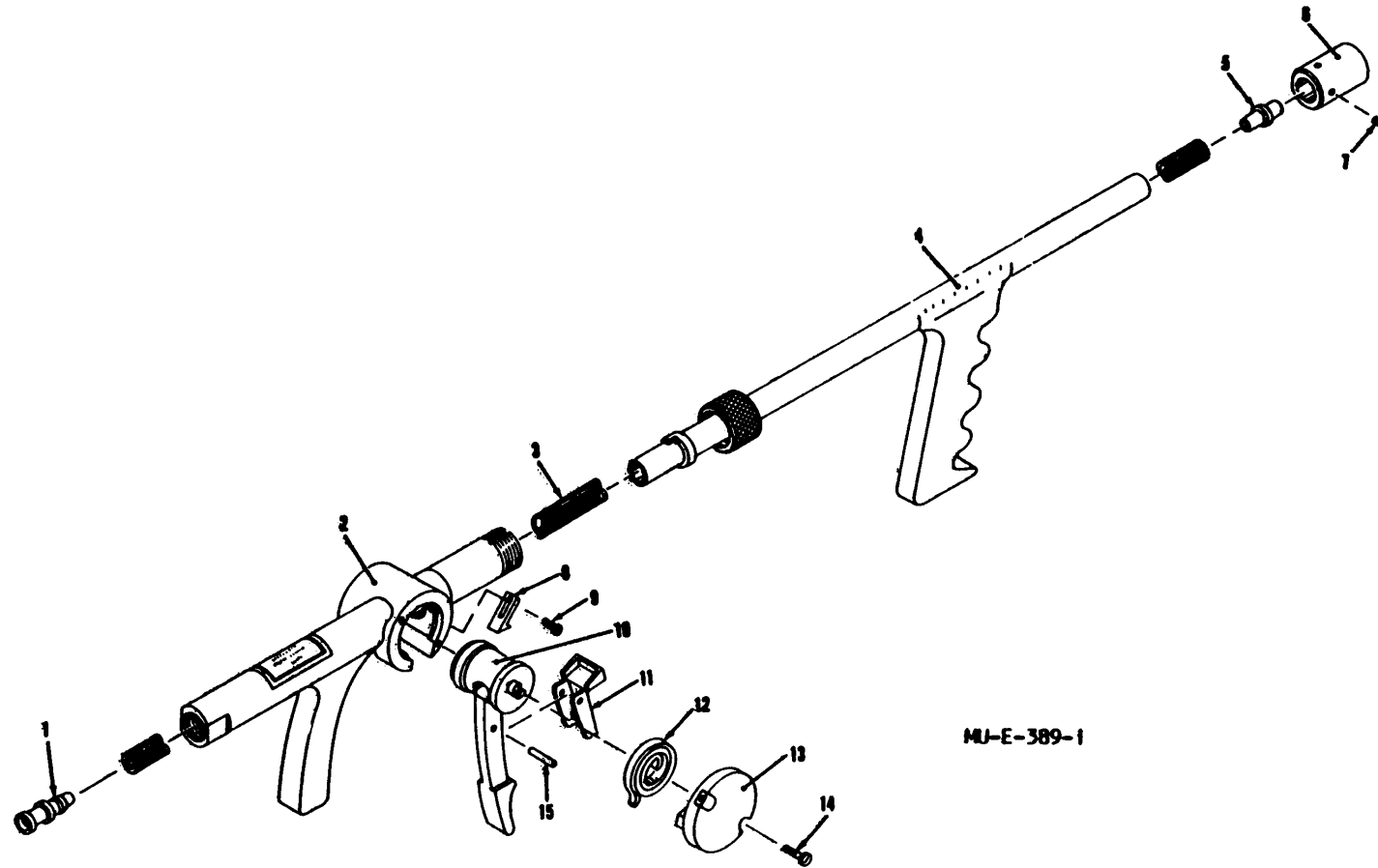
C	PB	FZ	Z	1040-859-7925	ADAPTER, SAFETY VALVE, ASSEMBLY B116-1-155 (81361)	ea	1	*	*	*	*	*	*	*	*	3	19
R	PB	OZ	Z	5305-724-6794	SETSCREW stl pltd, socket drive, c up point, No. 10-32 NF-3, 3/16 in. lg MS51964-48 (96906)	da	1	*	*	*	*	*	*	*	*	3	20
C	PA	OZ	Z	1040-871-2601	VALVE, SHUTOFF MODIFICATION C116-6-161 (81361)	ea	1	*	*	*	*	*	*	*	*	3	21
C	PA	PZ	Z	1040-861-9816	HANDLE, SHUTOFF VALVE B116-6-150 (81361)	ea	1	*	*	*	*	*	*	*	*	3	22
	PB	OZ	Z	1040-886-5730	HOSE ASSEMBLY B116-6-158 (81361)	ea	2	*	*	*	*	*	*	*	*	3	23
C	PB	OZ	Z	5305-984-6189	SCREW, MACHINE stl pltd, pan hd, No. 8-32 UNC-2A, 1/4 in. lg MS35206-241 (96906)	ea	1	*	*	*	*	*	*	*	*	3	24
	PA	OZ	Z	5330-248-3832	PACKING, PREFORMED syn rubber, 0.145 in. id, 0.285 in. od, 0.070 o/a h MS29513-007 (96906)	ea	1	*	*	*	*	*	*	*	*	3	25
C	PA	OZ	Z	5310-050-6644	WASHER, FLAT lead, 0.674 in. id, 7/8 in. od, 0.103 in. o/a h 38945ENP (81361) PRESSURE SECTION	ea	1	*	*	*	*	*	*	*	*	3	26
C	PB	OZ	Z	1040-860-2247	TUBE ASSEMBLY B116-6-148 (81361)	ea	1	*	*	*	*	*	*	*	*	4	1
C	PB	OZ	Z	1040-160-8050	REGULATOR, PRESSURE C81-1-778 (81361)	ea	1	*	*	*	*	*	*	*	*	4	1.1
C	PB	OZ	Z	4730-529-2366	COUPLING HALF, QUICK DISCONNECT 3000-63 (73992)	ea	1	*	*	*	*	*	*	*	*	4	2
R	PA	OZ	Z	5310-080-8495	NUT, PLAIN, WING 1/4-20 UNC-2B, 50 per can MS35425-39 (96906)	cn	1 ea	*	*	*	*	*	*	*	*	4	3
	PB	OH	H	1040-293-5891	TANK AND VALVE PRESSURE B81-1-879 (81361)	ea	1	*	*	*	*	*	*	*	*	4	4
	PB	OH	H	1040-160-8027	SHAFT ASSEMBLY, VALVE C81-1-883 (81361)	ea	1	*	*	*	*	*	*	*	*	4	5

Action Code	(1) SMR Code	(2) Federal Stock Number	(3) Description Reference Number & Mfr Code Usable On Code	(4) Unit of Meas	(5) Qty inc in unit	(6) 30-Day DS Maint Allowance			(7) 30-Day GS Maint Allowance			(8) 1-yr Alw per 100 Equip CNTGKY	(9) Depot Maint Alw Per 100 Equip	(10) Illustration	
						(a) 1-20	(b) 21-50	(c) 51-100	(a) 1-20	(b) 21-50	(c) 51-100			(a) Figure no.	(b) Item no.
						C	PB HZ Z	5325-160-8029	EYELET, METALLIC stl pltd, 0.120 in. h of bbl, .327 in. od A81-1-880 (81361)	ea	1				
C	PB HZ Z	5310-021-8588	NUT, PLAIN, HEXAGON brass, 5/16-24 UNF-2B 218588 (21450)	ea	1				*	*	*	*	*	4	7
C	PB HZ Z	1040-663-1485	HANDLE, VALVE 2 per box A81-1-473 (81361)	bx	1				*	*	*	*	*	4	8
C	PB HZ Z	5340-160-8030	CLAMP, LOOP stl, phosphate coating, 1/2 in. w o/a, 0.359 in. thk, 11/16 in. loop id, 3/4 in. mtg hole A81-1-881 (81361)	ea	1				*	*	*	*	*	4	9
C	PB HZ Z	4730-516-4447	NUT, TUBE, COUPLING brass, 0.815 in. P.006 smallest id, 11/16 in. o/a lg, 1 3/8 in. distance across flats, 90 deg seat, 1 1/16 in. 20 NC-2, u/w 0.312 in. M.006 od tube size, 5 per can A81-1-474 (81361)	cn	1				*	*	*	*	*	4	10
C	PB HZ Z	4730-160-8025	COUPLING HALF, QUICK DISCONNECT B81-1-885 (81361)	ea	1				*	*	*	*	*	4	11
C	PA HZ Z	1040-160-8083	VALVE, PRESSURE TAN: B81-1-439 (81361)	ea	1				*	*	*	*	*	4	12
C	PA HZ Z	1040-160-8011	VALVE ASSEMBLY, CHECK B81-1-2146 (81361)	ea	3				*	*	*	*	*	4	13
N	XA HH Z		TANK, PRESSURE C81-1-375 (81361)		1									4	14
C	PA OZ Z	1040-836-3490	PRESSURE REGULATOR AND SAFETY VALVE SECTION HEAD, SAFETY, PRESSURE RELIEF 175 psi max B77-EWA002 (92394)	ea	1	*	*	*	*	*	*	*	*	5	1

C	PB	FH	H	1040-160-8018	VALVE, SAFETY B81-1-1796 (81361)	ea	1	*	*	*	*	*	*	*	5	2
N	XA	HZ	Z		BODY, SAFETY VALVE B81-1-1798 (81361)		1								5	3
C	PB	HZ	Z	4820-203-8391	NEEDLE, SAFETY 10 per can B81-1-1800 (81361)	cn	1 ea			*	*	*	*	*	5	4
C	PB	HZ	Z	5360-514-0162	SPRING, HELICAL COMPRESSION phosphor bronze, 1 3/16 in. lg, .400 in. ed, 2 1/4 in. id 5 per can E81-1-1799 (81361)	cn	1 ea			*	*	*	*	*	5	5
C	PB	HZ	Z	4780-574-1998	REDUCER, TUBE B81-1-1797 (81361)	ea	1			*	*	*	*	*	5	6
	PB	OH	H	1040-160-8050	REGUOTOR, PRESSURE C81-1-778 (81361)	ea	1	*	*	*	*	*	*	*	5	7
C	PB	HZ	Z	1040-160-8036	VALVE, NEEDLE 20517 (26505)	ea	1			*	*	*	*	*	5	8
C	PB	HZ	Z	4820-647-1870	VALVE, NEEDLE 5 per can 20519 (26505)	cn	2 ea			*	*	*	*	*	5	9
N	KF	HZ	Z		GROMMET, FLANGE 51968 (26909)	ea	1			See FSN 1040-300-0014				5	10	
N	KF	HZ	Z		DIAPHRAGM 822117-1 (26505)	ea	1			See FSN 1040-300-0014				5	11	
N	KF	HZ	Z		PLATE, DIAPHRAGM 51968 (26505)	ea	1			See FSN 1040-300-0014				5	12	
N	KF	HZ	Z		SPRING, HELICAL COMPRESSION 20908 (26505)	ea	1			See FSN 1040-300-0014				5	13	
C	PB	HZ	Z	4730-826-0098	NIPPLE, PIPE 1-4 x 7-8 Type 316 (88216)	ea	1			*	*	*	*	*	5	14
C	PB	HZ	Z	5805-866-0439	SCREW, MACHINE MS35265-85 (96906)	ea	8			*	*	*	*	*	5	15
C	PA	HZ	Z	4780-689-9347	ADAPTER Straight, pipe to tube 24960 (26505)	ea	1			*	*	*	*	*	5	16
C	PA	HZ	Z	5815-160-8042	PIN, SHOULDER, HEADLESS 261101 (266056)	ea	1			*	*	*	*	*	5	17

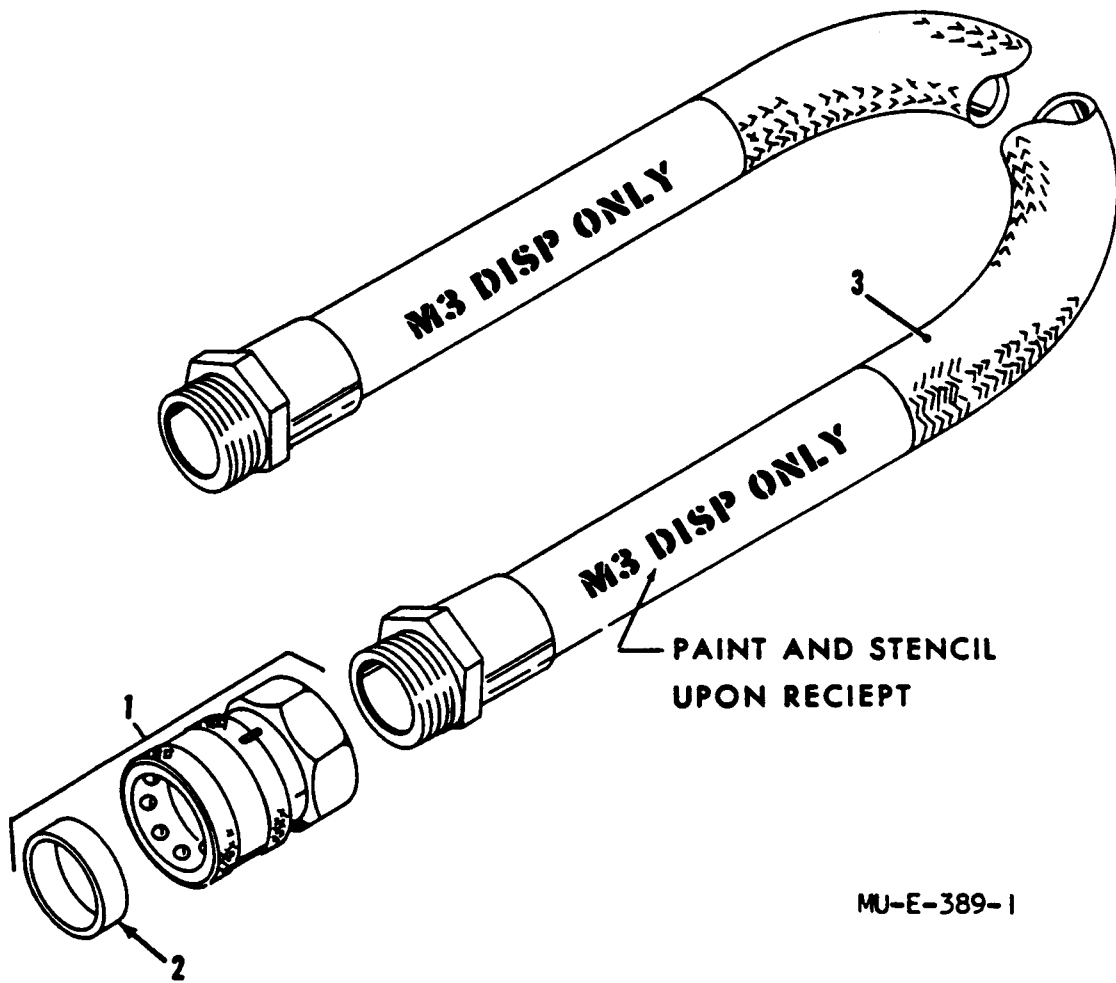
Action Code	(1) SMR Code	(2) Federal Stock Number	(3) Description Reference Number & Mfr Code Usable On Code	(4) Unit of Meas	(5) Qty inc in unit	(6) 30-Day DS Maint Allowance			(7) 30-Day GS Maint Allowance			(8) 1-yr Alw per 100 Equip CNTGCTY	(9) Depot Maint Alw Per 100 Equip	(10) Illustration	
						(a) 1-20	(b) 21-50	(c) 51-100	(a) 1-20	(b) 21-50	(c) 51-100			(a) Figure no.	(b) Item no.
						N	KF HZ Z		GASKET, VALVE SEAT 027-06603 (26505)	ea	2				
N	KF HZ Z		SEAT ASSEMBLY VALVE B81-1-793 (81861)	ea	1				See FSN 1040-829-1771					5	19
C	PA HZ Z	4780-972-7670	STRAINER 5 per can 104-00022 (98356)	ea	1 ea				*	*	*	*	*	5	20
C	PB HZ Z	4820-611-6803	VALVE 22062 (12570)	ea	1				*	*	*	*	*	5	21
C	PB HZ Z	5340-205-4458	SPRING, HELICAL COMPRESSION 22128 (26505)	ea	1				*	*	*	*	*	5	22
N	KF HZ Z		PACKING, PREFORMED MS28775-213 (96906)	ea	1				See FSN 1040-829-1771					5	23
C	PB HZ Z	5365-984-8861	PLUG, RETAINING, PRESSURE SPRING 51438 (26505) CARRIER SECTION	ea	1				*	*	*	*	*	5	24
P	OZ Z	1040-205-0358	STRAP ASSEMBLY, UPPER B81-1-520 (81361)	ea	2	*	*	*	*	*	*	*	*	6	1
C	PA OZ Z	1010-696-1874	PACK, CARRIER C81-1-873 (81361)	ea	1	*	*	*	*	*	*	*	*	6	2
C	PB OZ Z	5315-842-3044	PIN, COTTER stl, phosphate finish, 3/12 in. nom dia, 3/4 in. nom lg M24S665-283 (96906)	ea	2	*	*	*	*	*	*	*	*	6	3
C	PB OZ Z	5315-663-1478	PIN, STRAIGHT, HEADED stl, rd hd, 1/4 in. dia of shank, 7/8 in. lg under hd, drilled shank A81-1-518 (81361)	ea	2	*	*	*	*	*	*	*	*	6	4
C	PB OZ Z	5305-068-0501	SCREW, CAP, HEXAGON HEAD stl pltd, 1/4-20 UNC-2A, 0.625 lg MS90725-5 (96906)	ea	4	*	*	*	*	*	*	*	*	6	5
C	PB OZ Z	5310-582-5965	WASHER, LOCK stl, cad pltd, split helical, hole	ea	5	*	*	*	*	*	*	*	*	6	6

C	PB	OZ	Z	5310-761-6882	dia 0.255 in. id, 0.489 in. id, 0.062 in. thk AN935416 (88044). NUT, PLAIN, HEXAGON stl pltd, 1/4-20 UNC-2B MS51967-2 (96906)	ea	5	*	*	*	*	*	*	*	*	6	7
	PA	OZ	Z	1040-205-0360	STRAP ASSEMBLY, LONG B81-1-519 (81361)	ea	1	*	*	*	*	*	*	*	*	6	8
	PA	OZ	Z	1040-205-0361	STRAP ASSEMBLY, LOWER B81-1-520 (81361)	ea	2	*	*	*	*	*	*	*	*	6	9
C	PA	OZ	Z	4020-993-3583	CORD, NYLON 9 carriers per braid, 1 yarn per carrier, single yarn, olive drab. 1/8 in. nom dia, 400 lb breaking strength	ft	12	*	*	*	*	*	*	*	*	6	10
					MIL-C-43307 (81349) CLAMP, LOOP stl, phosphate coating, 1/2 in. w o/a, 0.0598 in. thk, 1 1/16 in. loop id, 9/32 in. dia of hole, 5 per bundle A81-1-487 (81361)	bd	1 ea	*	*	*	*	*	*	*	*	6	11
C	PB	OZ	Z	5305-068-0502	SCREW, CAP, HEXAGON HEAD stl pltd, 1/4-20 UNC-2A, 3/4 in. lg MS90725-6 (96906)	ea	1	*	*	*	*	*	*	*	*	6	12
C	PB	HH	Z	1400-960-8063	FRAME, CARRIER D81-1-504 (81361)	ea	1				*	*	*	*	*	6	13
	PA	OZ	Z	1040-205-0359	STRAP -ASSEMBLY, SHORT D81-1-519 (81361)	ea	1	*	*	*	*	*	*	*	*	6	14
					GROUP 400-ACCESSORIES GROUP CHEST, PACKING E116-3-42 (81361)	ea	1										
R	PA	OZ	Z	8415-266-8677	GLOVES, RUBBER Syn, 14 in. lg, size 10 ZZ-G-381, Type I, Class 2 (81348)	pr	2	*	*	*	*	*	*	*	*		
					GROUP 500-REPAIR KIT GROUP REPAIR KIT, PRESSURE CONTROL R81-1-4904 (81361)	ea	1				*	*	*	*	*	KIT	-
					1 EA-GROMMET, FLANGE											5	10
					1 EA-DIAPHRAGM											5	11
					1 EA-PLATE, DIAPHRAGM											5	12
					1 EA-SPRING, HELICAL COMPRESSION											5	13
C	PA	HZ	Z	1040-829-1771	PARTS KIT, PRESSURE REGULATOR, FLAME THROWER NOREF (33333)	ea	1				*	*	*	*	*	KIT	-
					2 EA-GASKET, VALVE SEAT											5	18
					1 EA-SEAT, ASSEMBLY VALVE											5	19
					1 EA-PACKING, PREFORMED											5	23



MJ-E-389-1

Figure 1. Gun group.



MU-E-389-1

Figure 2. Hose group.

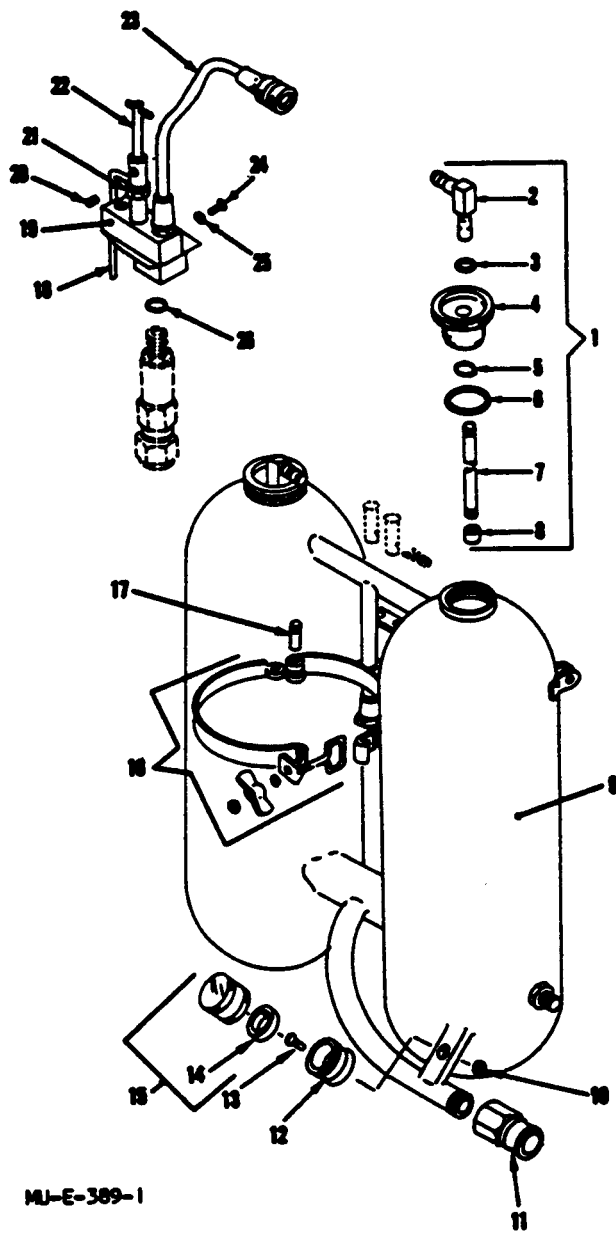
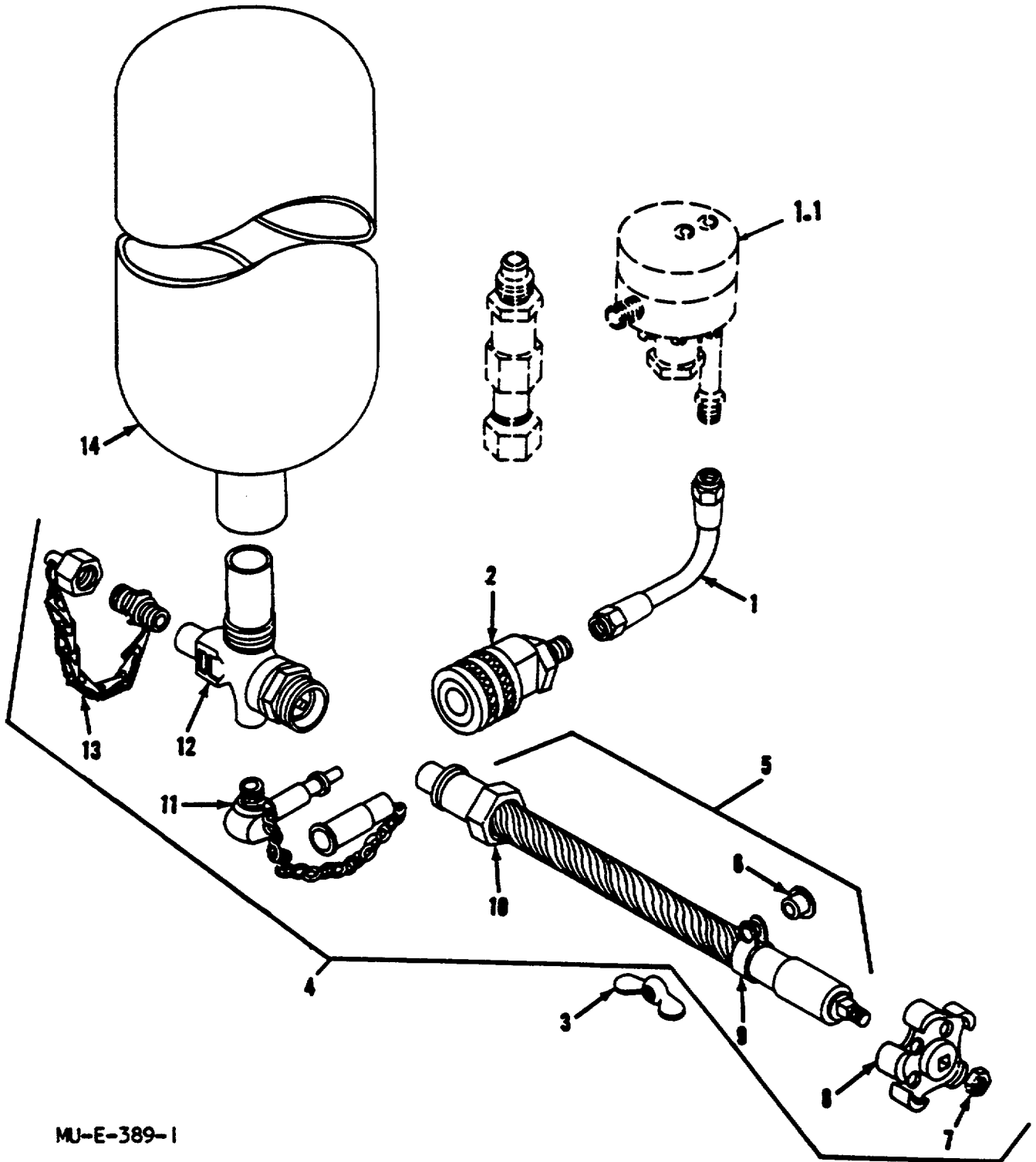
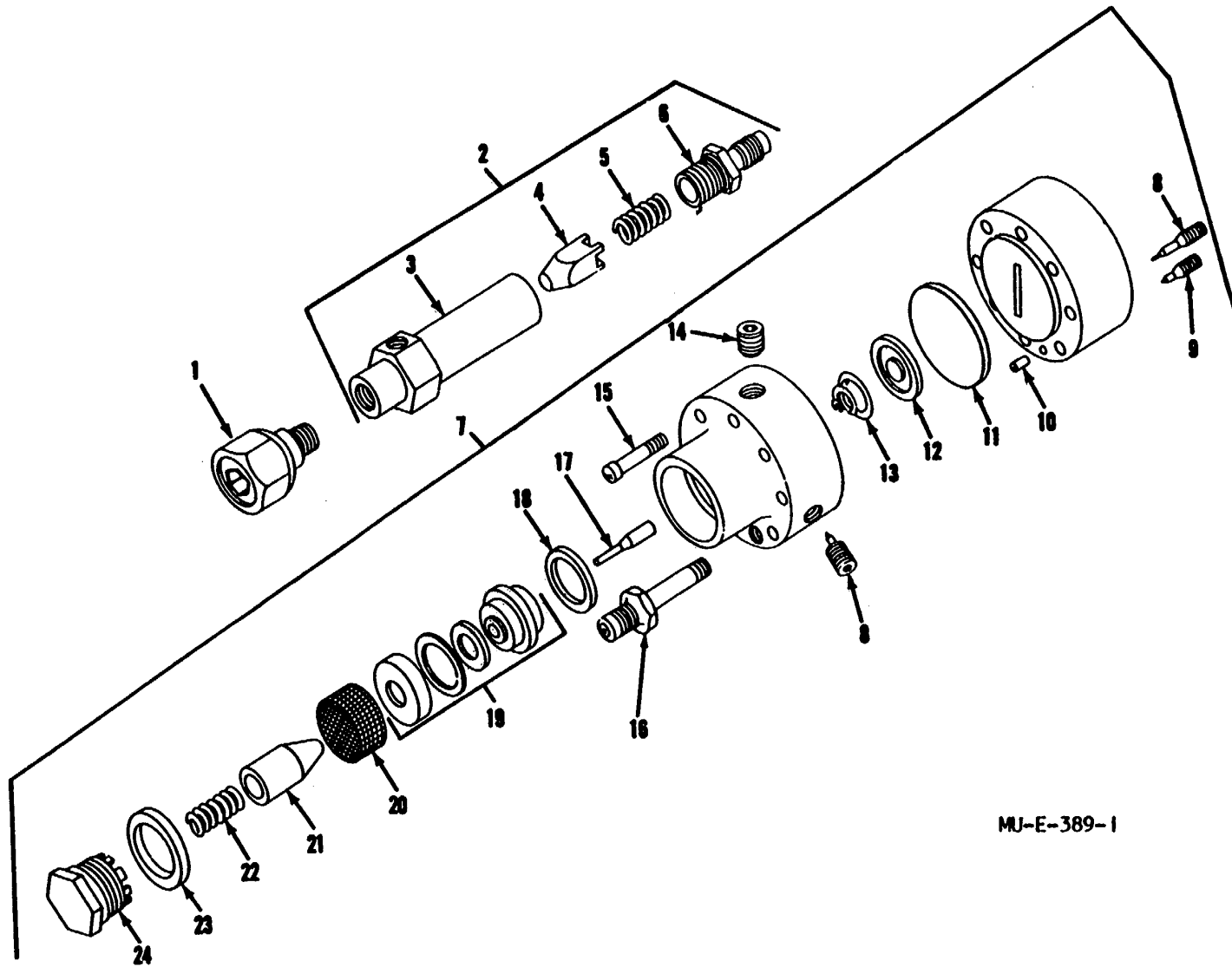


Figure 3. Tank group, agent section.



MU-E-389-1

Figure 4. Tank group, pressure section.



MJ-E-389-1

Figure 5. Tank group, pressure regulator, and safety valve section.

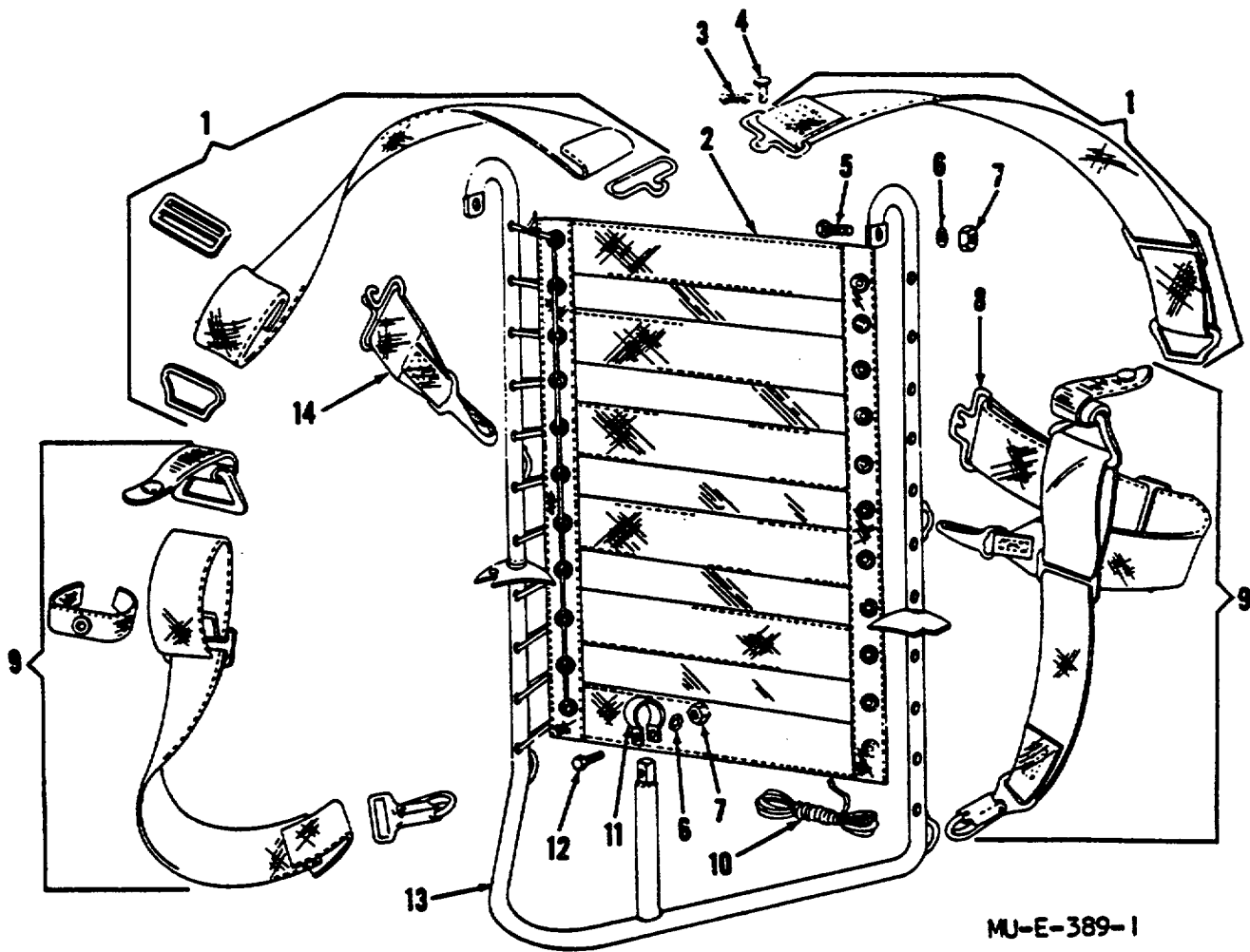


Figure 6. Tank group, carrier section.

Section VI. INDEX-FEDERAL STOCK NUMBER AND REFERENCE NUMBER

CROSS-REFERENCE TO FIGURE AND ITEM NUMBER

<i>Stock Number</i>	<i>Figure No.</i>	<i>Item No.</i>	<i>Stock Number</i>	<i>Figure No.</i>	<i>Item No.</i>
1040-160-8011	4	13			
1040-160-8014	3	16	5305-984-6189	3	24
1040-160-8018	5	2	5305-984-6193	1	14
1040-160-8027	4	5	5310-021-8588	4	7
1040-160-8036	5	8	5310-050-6644	3	26
1040-160-8050	4	1.1	5310-080-8495	4	3
	5	7	5310-582-5965	6	6
1040-160-8063	6	13	5310-761-6882	6	7
1040-160-8068	3	9	5310-905-8451	3	10
1040-160-8083	4	12	5315-160-8042	5	17
1040-205-0358	6	1	5315-663-1478	6	4
1040-205-0359	6	14	5315-826-3251	1	15
1040-205-0360	6	8	5315-842-3044	6	3
1040-205-0361	6	9	5320-068-6929	3	17
1040-293-5891	4	4	5325-160-8029	4	6
1040-300-0014	-	-	5330-248-3832	3	25
1040-439-7985	1	10	5330-248-3836	3	3
1040-663-1485	4	8	5330-265-1092	3	6
1040-696-1374	6	2	5330-579-1943	2	2
1040-771-4551	1	11		3	14
1040-771-4552	1	4	5340-022-8381	3	12
1040-771-4553	1	13	5340-160-8030	4	9
1040-771-4554	1	12	5340-160-8065	6	11
1040-771-4555	1	2	5340-205-4458	5	22
1040-771-4557	1	-	5360-514-0162	5	5
1040-771-4558	1	1	5365-803-7301	3	5
1040-777-2973	1	5	5365-984-8861	5	24
1040-777-2794	1	6	8415-266-8677	-	-
1040-822-1188	1	8			
1040-829-1771	-	-	<i>Reference No.</i>	<i>Mfg Code</i>	<i>Figure No.</i>
1040-836-3490	5	1			<i>Item No.</i>
1040-859-7925	3	19	AN935416	88044	6
1040-860-2247	4	1	A81-1-473	81361	4
1040-861-6744	3	4	A81-1-474	81361	4
1040-861-9816	3	22	A81-1-487	81361	6
1040-871-2600	3	2	A81-1-518	81361	6
1040-871-2601	3	21	A81-1-880	81361	4
1040-886-5730	3	23	A81-1-881	81361	4
4020-993-3583	6	10	B116-1-155	81361	3
4710-277-5526	3	18	B116-4-23	81361	1
4710-850-3311	3	7	B116-4-25	81361	1
4720-812-0205	1	3	B116-4-28	81361	1
4720-839-3423	2	3	B116-4-32	81361	1
4730-102-9670	3	11	B116-4-33	81361	1
4730-160-8025	4	11	B116-4-35	81361	1
4730-516-4447	4	10	B116-6-148	81361	4
4730-529-2366	4	2	B116-6-150	81361	3
4730-574-1998	5	6	B116-6-153	81361	3
4730-639-9347	5	16	B116-6-158	81361	3
4730-826-0093	5	14	B116-6-159	81361	3
4730-851-6002	3	8	B77EWA002	92349	5
4730-893-5001	3	15	B81-1-1796	81361	5
4730-895-3048	2	1	B81-1-1797	81361	5
4730-972-7670	5	20	B81-1-1798	81361	5
4820-203-8391	5	4	B81-1-1799	81361	5
4820-611-6803	5	21	B81-1-1800	81361	5
4820-647-1870	5	9	B81-1-2146	81361	4
5305-068-0501	6	5	B81-1-439	81361	4
5305-068-0502	6	12	B81-1-519	81361	6
5305-724-5811	1	7			6
5305-724-6794	3	20	B81-1-520	81361	6
5305-866-0439	5	15			6
5305-889-3001	3	13	B81-1-6930	81361	2
5305-984-4984	1	9	B81-1-793	81361	5

Reference No.	Mfg Code	Figure No.	Item No.	Reference No.	Mfg Code	Figure No.	Item No.
B81-1-879	81361	4	4	MS35206-241	96906	3	24
B81-1-885	81361	4	11	MS35206-245	96906	1	14
C116-4-26	81361	1	4	MS35245-39	96906	4	3
C116-4-29	81361	1	13	MS35265-86	96906	5	15
C116-6-154	81361	3	1	MS51964-48	96906	3	20
C116-6-161	81361	3	21	MS51964-64	96906	1	7
C150-1-4-24	81361	3	11	MS51967-2	96906	6	7
C81-1-1573	81361	3	16	MS90725-5	96906	6	5
C81-1-375	81361	4	14	MS90725-6	96906	6	12
C81-1-778	81361	5	7	NOREF	33333	5	-
C81-1-873	81361	6	2	R81-1-4904	81361	KIT	-
C81-1-883	81361	4	5	VW-P-406WTA	81348	3	7
C81-1-9711	81361	2	-	VW-P-521	81348	3	8
D116-4-16	81361	1	-	ZZ-G-381, Type 1,	81348	-	-
D116-4-17	81361	1	2	Class 2			
D116-4-24	81361	1	10	025-01101	26505	5	23
D150-1-11-4-2A	81361	2	1	027-06603	26505	5	18
D150-1-14-11	81361	3	15	104-00022	93465	5	20
D81-1-2063	81361	6	13	1-4x7-8TYPE316	88216	5	14
E116-3-42	81361	-	-	20517	26505	5	8
E81-1-483	81361	3	9	20519	26505	5	9
H12-56-JF	78357	2	2	20908	26505	5	13
MIL-C-43307	81349	6	10	218588	21450	4	7
MIL-R-3065	81349	1	3	22062	12570	1	9
MS16562-223	96906	1	15	22128	26505	5	22
MS16624-1050	96906	3	5	24960	26505	5	16
MS20613-6P18	96906	3	17	261101	26505	5	17
MS21083N06	96906	3	10	3000-63	73992	4	2
MS24665-283	96906	6	3	31094R	24617	3	18
MS28775-213	96906	5	23	38945ENP	81361	3	26
MS29513-011	96906	3	25	4088	78357	3	12
MS29513-012	96906	3	3	51438	26505	5	24
MS29513-219	96906	3	6	51968	26505	5	10
MS35206-227	96906	1	9			5	12
MS35206-231	96906	3	13	822117-1	26505	5	11

By Order of the Secretary of the Army:

Official:

VERNE L. BOWERS,
Major General, United States Army,
The Adjutant General

W. C. WESTMORELAND,
General, United States Army,
Chief of Staff.

Distribution:

To be distributed in accordance with DA Form 12-28 (qty rqr block No. 118) organizational maintenance requirements for Riot Control Agent Dispersers, Portable.

TM 3-1040-214-24P

PIN: 024142-000